

Giunti Verticali  
Vertical Fittings





Per informazioni riguardanti quantità minime ordinabili e colori personalizzati rivolgersi a: [info@effegibrevetti.com](mailto:info@effegibrevetti.com).

For information about minimum order quantities and custom colors please contact: [info@effegibrevetti.com](mailto:info@effegibrevetti.com).

# Combi

## Giunto Verticale

Vertical Fitting



Progettato per librerie e armadiature, Combi è disponibile in due versioni:

- Combi B lavora sia orizzontalmente che verticalmente
- Combi M lavora verticalmente

Una versione è munita di un codolo sul fondo per minimizzarne la visibilità e rendere visibile solamente un piccolo disco metallico Ø 10 mm. Materiali: Zama, Nylon, Acciaio. Colori: Nero, Bianco. Pz per scatola: 500.

Designed for libraries and base structures, Combi is available in two versions:

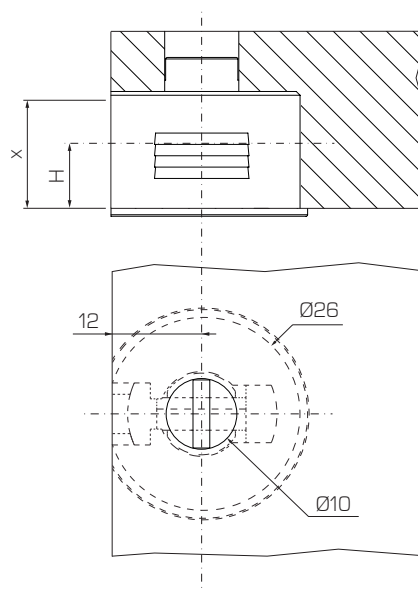
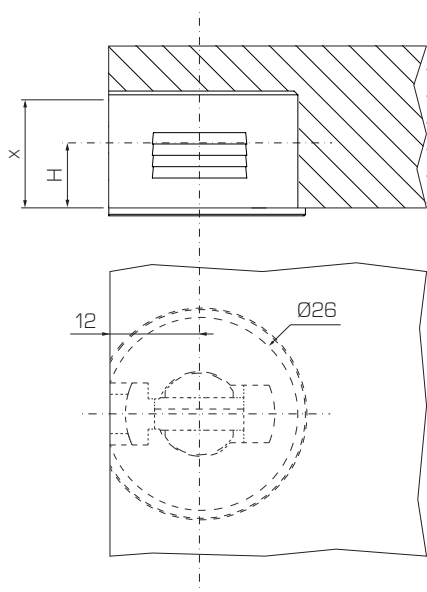
Combi B works both vertically and horizontally

Combi M works vertically

A version is integrated with a cylindrical dowel on the bottom to minimize its visibility and let you see just a small metal dot Ø 10 mm. Materials: Zama, Nylon, Steel. Colours: Black, White. Pcs per box: 500.

## Foratura ripiano Combi con bordo

Shelf's drilling Combi with collar



H	x	Cod.
10	15,5	COMXB1000 - COBXB1000
12,5	19	COMXB1250 - COBXB1250
14,5	20,5	COMXB1450 - COBXB1450
20	26,5	COMXB2000 - COBXB2000

H	x	Cod.
10	15,5	COMRB1000 - COBRB1000
12,5	19	COMRB1250 - COBRB1250
14,5	20,5	COMRB1450 - COBRB1450
20	26,5	COMRB2000 - COBRB2000

Finiture  
Finishings

01

Bianco  
White

02

Nero  
Black

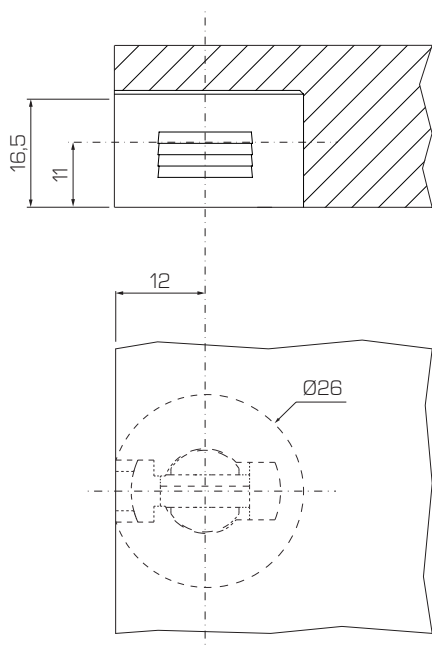
\*esempio/example: COMXB100001



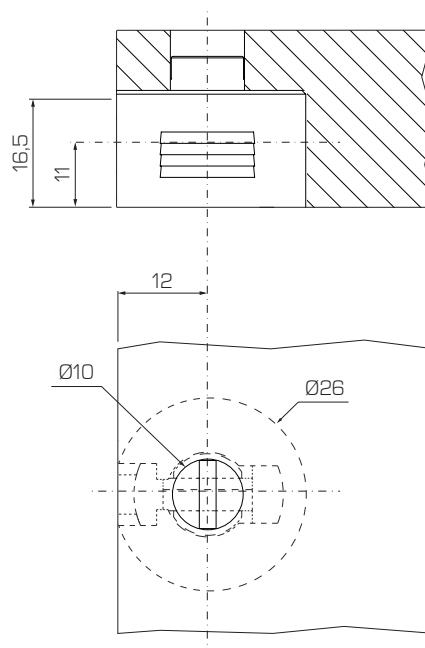
Utensile: chiave esagonale speciale  
Tool: special Allen key

UTXCHCOMC33

Foratura ripiano Combi senza bordo  
Shelf's drilling Combi without collar



H	x	Cod.
10	15,5	COMXX1100 - COBXX1100



H	x	Cod.
10	15,5	COMRX1100 - COBRX1100

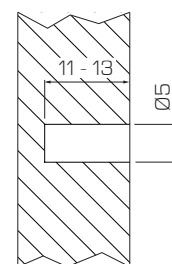
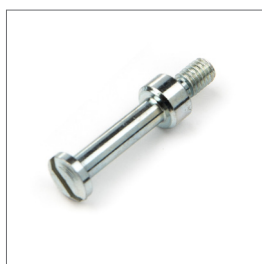
Finiture  
Finishings

01 | Bianco  
White

02 | Nero  
Black

\*esempio/example: COMRXB110001

Foratura perni spalla  
Side panel's pins drilling



Perno filetto M4x7  
Thread forming pin M4x7

COPMT040731



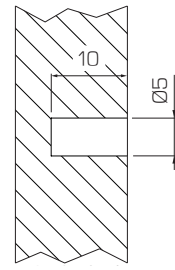
**Perno filetto M4x9**  
Thread forming pin M4x9

COPMT040931

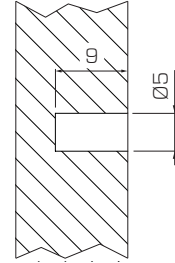


**Estraibile**  
Removable

BUEXO409030



BUXX0410030

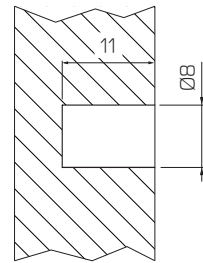


**Perno filetto M6x6**  
Thread forming pin M6x6

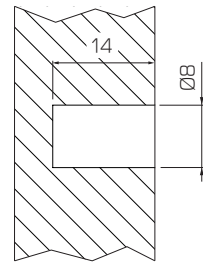
COPMT060631



BUXP0609030

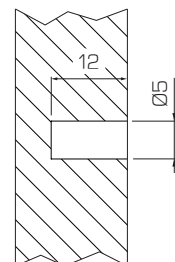


BUXP0612030

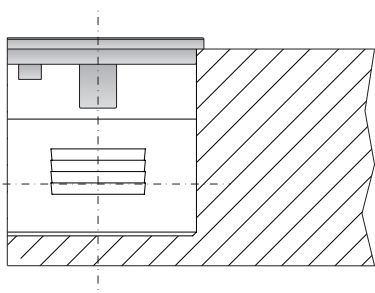


**Perno mordente legno**  
Thread cutting pin

COPML051031

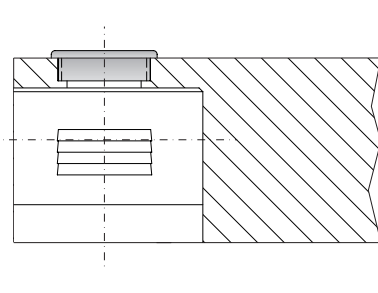


Tappi  
Caps



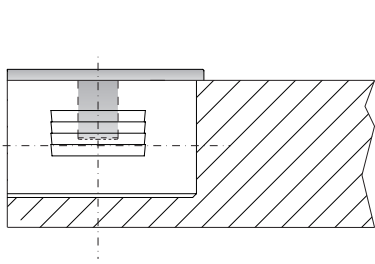
Tappo a collare  
Cap with collar

TPXCOCOLL



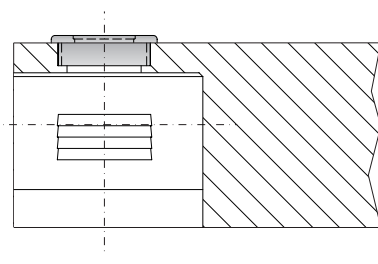
Tappo aperto  
Open cap

TPXZMAPER



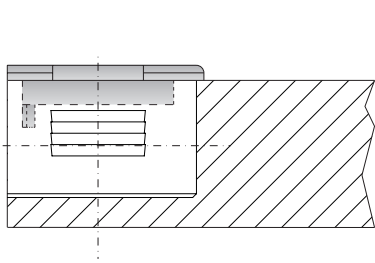
Tappo a spina  
Plug cap

TPXCOSPIN



Tappo chiuso  
Closed cap

TPXZMCHIU



Tappo a incastro  
Snap-fit cap

TPXCOINCA

Finiture 01 | Bianco | 02 | Nero  
Finishings White Black

\*esempio/example: TPXCOCOLL01

Finiture 36 | Nichelato | 32 | Zincato nero  
Finishings Nickel Black zinc

\*esempio/example: ???36

# MiniCombi

## Giunto Verticale Vertical Fitting



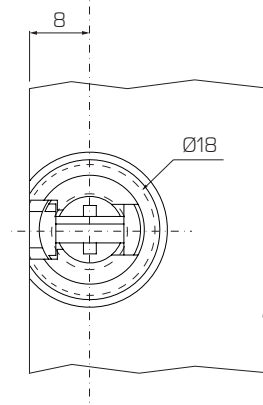
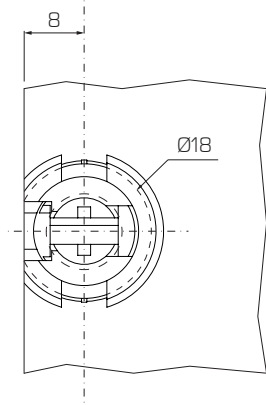
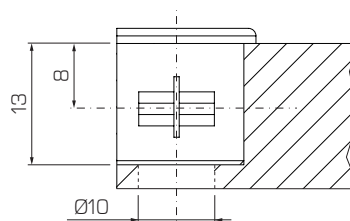
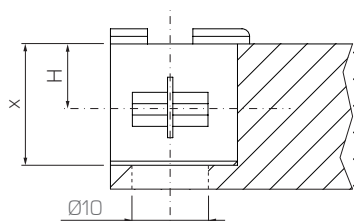
Giunzione verticale progettato per librerie e armadiature leggere. I pannelli sono facilmente removibili.

Materiali: Zama, Nylon, Acciaio. Colori: Nero, Bianco. Pz per scatola: 500.

Vertical fitting designed for light libraries and base structures. Panels are easily removable.

Materials: Zama, Nylon, Steel. Colours: Black, White. Pcs per box: 500.

## Foratura ripiano Shelf's drilling



H	x	Cod.
9,5	15	MCXRB0950
11	16	MCXRB1100
12,5	17,5	MCXRB1250

Cod.  
MCXRB0800

Finiture  
Finishings

01	Bianco White	02	Nero Black
----	-----------------	----	---------------

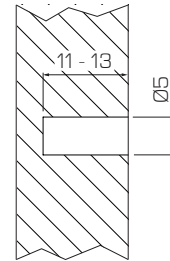
\*esempio/example: MCXRB080001



Utensile: chiave esagonale speciale  
Tool: special Allen key

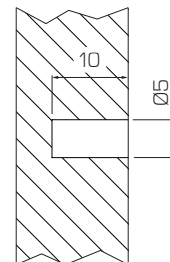
UTXCHCOMC33

**Foratura perni spalla**  
Side panel's pins drilling



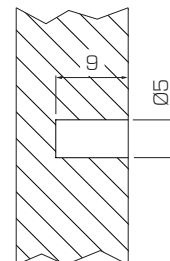
**Perno filetto M4x7**  
Thread forming pin M4x7

MCPMT040731

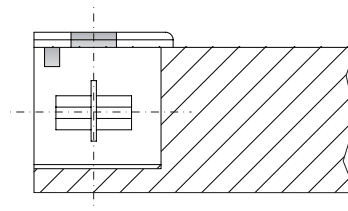


**Perno filetto M4x9**  
Thread forming pin M4x9

MCPMT040931



**Tappo**  
Cap



MCTPLINCA

Finiture | 01 | Bianco  
Finishings | White

02 | Nero  
Black

\*esempio/example: MCTPLINCA01

# Beta

## Giunto Verticale

Vertical Fitting



Per librerie e armadiature, disponibile in due versioni:

- Beta B lavora sia orizzontalmente che verticalmente
- Beta M lavora verticalmente

Pannelli removibili. Una versione è sprovvista del bordo rialzato per il montaggio a filo con la superficie del piano. Beta è progettato per essere abbinato al supporto da inserire nella spalla del mobile. Materiali: Zama, Acciaio. Finiture Supporto: Zincata, Zincata Nera. Pz per scatola: 1000.

For libraries and base structures, is available in two versions:

- Beta B works both vertically and horizontally
- Beta M works vertically

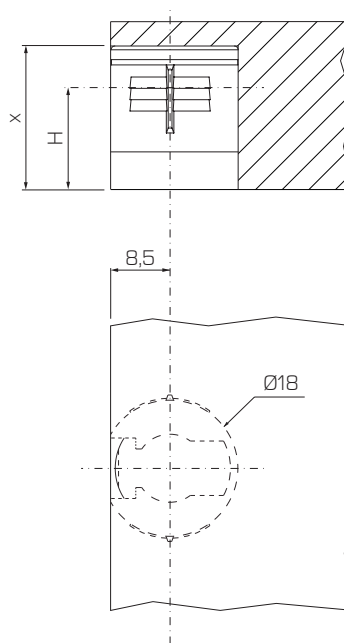
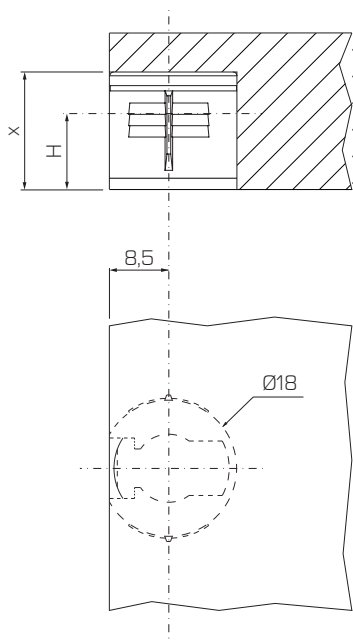
Removable panels. A version is not provided with raised edge so you can mount it flush with the surface plane. Beta is designed to be combined with the support to insert in the side panel of the furniture. Materials: Zama, Steel. Support Finishings: Zinc Plated, Black Zinc Plated. Pcs per box: 1000.

### Foratura ripiano Beta senza bordo

Shelf's drilling Beta without collar

### Foratura ripiano Beta con rialzo

Shelf's drilling Beta with raised edge



H	x	Cod.
8 - 10 - 11	14 - 16 - 17	BEMXX0800 - BEBXX0800

H	x	Cod.
12,5	18,5	BEMXX1250 - BEBXX1250
14,5	20,5	BEMXX1450 - BEBXX1450

Finiture 31 | Zincato  
Finishings Zinc

\*esempio/example: BEMXX080001



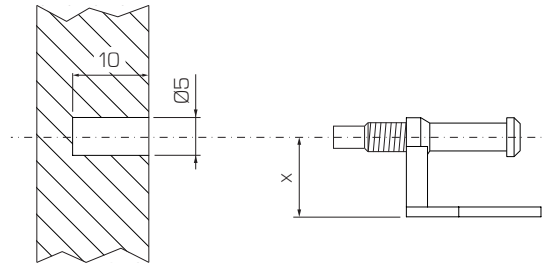
Utensile: chiave esagonale speciale  
Tool: special Allen key

UTXCHCOMC33

**Foratura perni spalla**  
Side panel's pins drilling



BUXX0410030

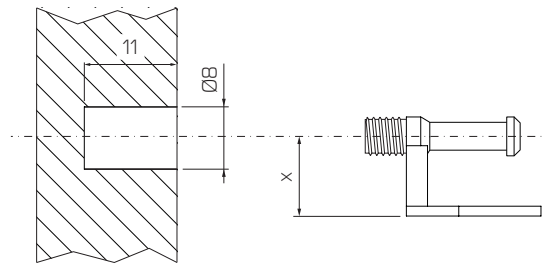


**Perno filetto M4**  
Thread forming pin M4

x	Cod.
8	BE080M409
10	BE100M409
11	BE110M409
12,5	BE125M409
14,5	BE145M409



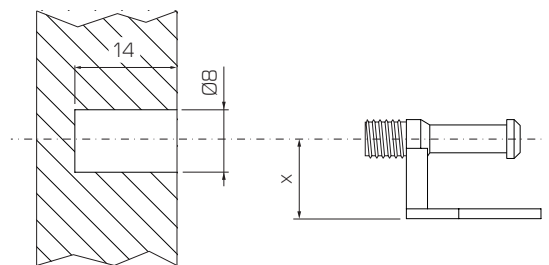
BUXP0609030



**Perno filetto M6**  
Thread forming pin M6



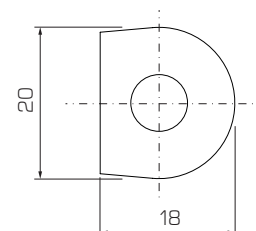
BUXP0612030



Finiture 36 | Nichelato 32 | Zincato nero  
Finishings Nickel Black zinc

\*esempio/example: BE080M40936

x	Cod.
8	BE080M609
10	BE100M609
11	BE110M609
12,5	BE125M609
14,5	BE145M609



Il catalogo di Effegibrevetti contiene:

- Aperture a Ribalta
- Aperture a Pacchetto
- Aperture Verticali
- Aperture Oblique
- Apertura a Pantografo
- Aperture Scorrevoli Complanari
- Aperture Scorrevoli
- Cerniere
- Bussole a Espansione
- Giunti Orizzontali
- Giunti Verticali
- Giunti a Scatto
- Reggipiani
- Livellatori
- Push to Open

\*Effegibrevetti ha la facoltà di apportare ai prodotti tutte le modifiche e migliorie tecniche.

Effegibrevetti's catalog contains:

- Flap Openings
- Folding Openings
- Vertical Openings
- Oblique Openings
- Pantograph Openings
- Coplanar Sliding Mechanisms
- Standard Sliding Mechanisms
- Hinges
- Spreading Dowels
- Horizontal Fittings
- Vertical Fittings
- Snap Fittings
- Shelf Supports
- Levellers
- Push to Open

\*Effegibrevetti reserve the right to make changes and technical improvements to its products.

# EFFEGIBREVETTI

Effegibrevetti S.r.l.

Via Cava Trombetta 17/25  
20090 Segrate Milano Italy

Tel +39 02 26921838  
Fax +39 02 26921737

info@effegibrevetti.com  
www.effegibrevetti.com

**COMPANY WITH  
QUALITY SYSTEM  
CERTIFIED BY DNV GL  
= ISO 9001 =**